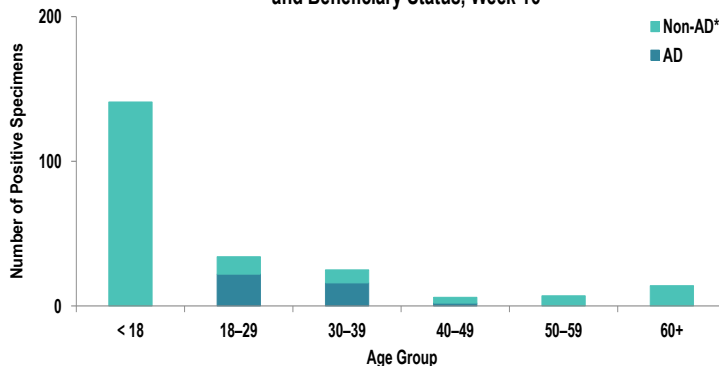


SUMMARY

Influenza activity in the Army population is low and continues to decrease. Overall, respiratory syncytial virus (RSV) activity is low. No influenza-associated hospitalizations were report during Week 16. The season total thus far is 169 hospitalizations compared to an average of 195 hospitalizations in the same time period during the 2018-2023 seasons. Nationwide, influenza activity continues to decrease, with 3.9% of specimens tested by clinical laboratories being positive for influenza A or B, according to the Centers for Disease Control and Prevention (CDC).

DEMOGRAPHICS

Positive Respiratory Specimen Results from Army MTFs by Age Group and Beneficiary Status, Week 16



AD: Forty positive respiratory specimens were collected from active duty (AD) service members (SMs) during Week 16; 55.0% (n=22) of the positive specimens were collected from SMs 18 – 29 years of age.

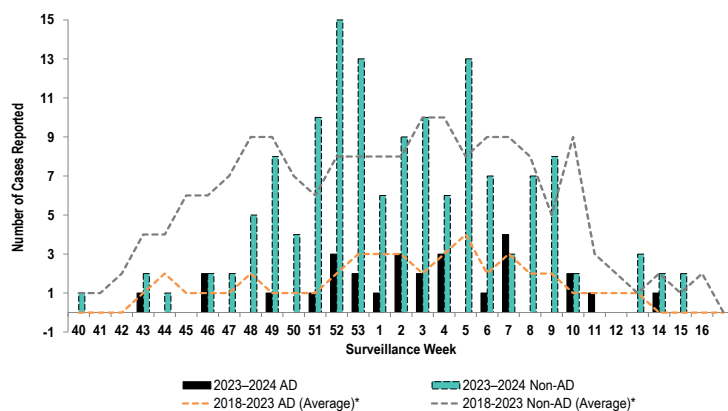
Non-AD: One hundred and eighty-seven positive respiratory specimens were collected from non-AD individuals during Week 16; 75.4% (n=141) of the positive specimens were collected from individuals under 18 years of age.

*Non-AD=All individuals that are not active duty service members.

The age and beneficiary status of some cases were not available. Therefore, all calculations involving these variables were conducted using only available data. Differences in total results, and age- and beneficiary status-specific results may be noted throughout the report.

INFLUENZA-ASSOCIATED HOSPITALIZATIONS

Army Influenza-Associated Hospitalizations Reported in DRSi by Onset Week



No influenza-associated hospitalizations with an onset date in Week 16 were reported to the Disease Reporting System internet (DRSi). The season total thus far is 169 hospitalizations. The Week 16 average during the 2018 – 2023 seasons was two hospitalizations (with an average of 195 hospitalizations reported from the start of the season through Week 16).

The DRSi does not capture cases older than 65 years old for influenza-associated hospitalizations.

*Data from the 2020-2021 and 2021-2022 influenza seasons are not included in comparison calculations due to the unusually low incidence of influenza.

Data are preliminary and subject to change.

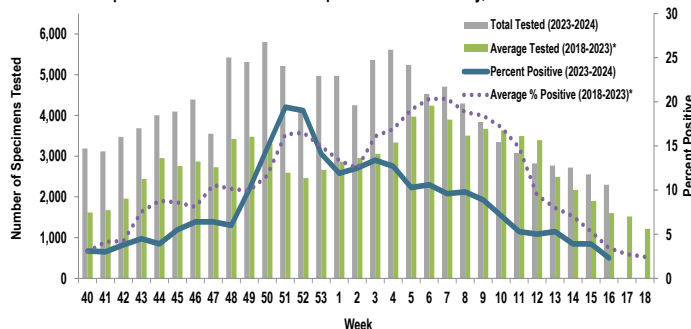
Disclaimer: The mention of any non-federal entity and/or its products is for informational purposes only, and not to be construed or interpreted, in any manner, as federal endorsement of that non-federal entity or its products.

Questions?
Email DCPH-A_DEP

INFLUENZA A ACTIVITY - ARMY

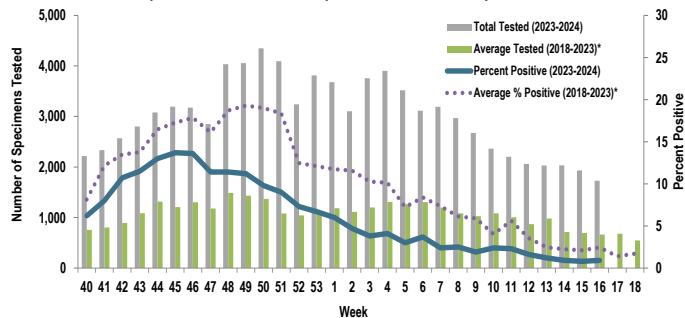
RSV ACTIVITY - ARMY

Proportion of Positive Influenza A Specimens for U.S. Army, 2023-2024



Of the 2,298 specimens tested for influenza A during Week 16, 2.3% (n=54) were positive. Influenza A activity is low and continues to decrease.

Proportion of Positive RSV Specimens for U.S. Army, 2023-2024



Of the 1,729 specimens tested for RSV during Week 16, 0.9% (n=15) were positive. RSV activity is low and continues to decrease.

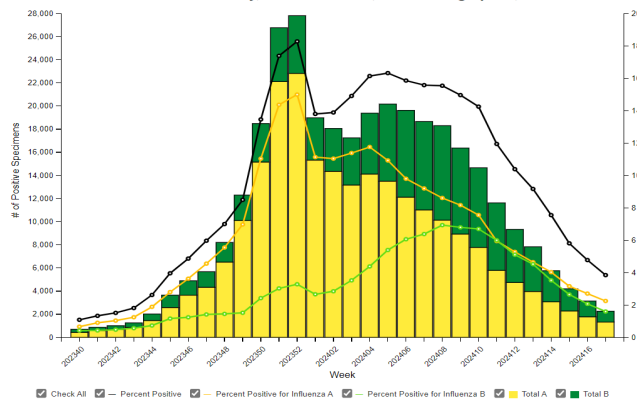
*Data from the 2020–2021 and 2021–2022 influenza seasons are not included in comparison calculations due to the unusually low incidence of influenza.

	Week 13	Week 14	Week 15	Week 16	Season Total	
Army MTF Laboratory Results, 2023-24	Adenovirus	13	15	21	17	404
	Enterovirus	51	59	49	66	1,385
	Influenza A	148	105	100	54	11,336
	Influenza B	74	77	64	47	4,988
	Parainfluenza	36	27	33	28	494
	RSV	24	19	15	15	6,018
	Negative	2,484	2,494	2,336	2,143	99,996
	Total	2,830	2,796	2,618	2,370	124,621

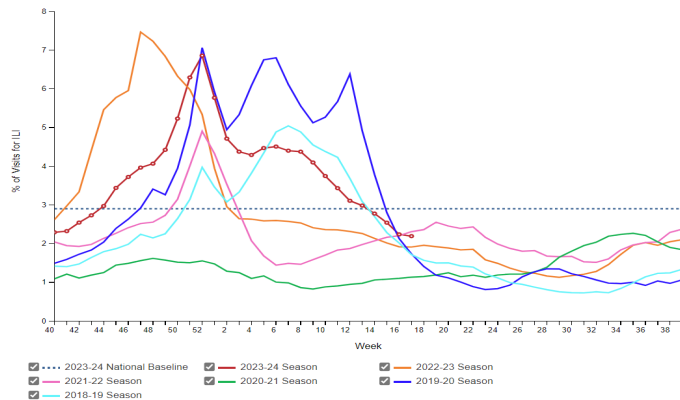
Of the 2,370 specimens tested during Week 16, 9.6% (n=227) were positive for any type of respiratory illness. Enterovirus accounted for 29.1% (n=66) of the positive results, influenza A accounted for 23.8% (n=54), influenza B accounted for 20.7% (n=47), parainfluenza accounted for 12.3% (n=28), adenovirus accounted for 7.5% (n=17), and RSV accounted for 6.6% (n=15). Additionally, the reported number of specimens tested decreased 9.5% from Week 15 to Week 16. Significantly more tests for influenza have been conducted this season compared to past seasons; 122,749 specimens have been tested for influenza A so far this season compared to the average of 87,092 specimens during the same time period in 2018-2023*.

INFLUENZA-LIKE ILLNESS (ILI) ACTIVITY - UNITED STATES

Influenza Positive Tests Reported to CDC by Clinical Laboratories, National Summary, 2023-24 Season, week ending Apr 27, 2024



Percentage of Outpatient Visits for Respiratory Illness Reported by The U.S. Outpatient Influenza-like Illness Surveillance Network (ILINet), Weekly National Summary, 2023-24 Season and Selected Previous Seasons

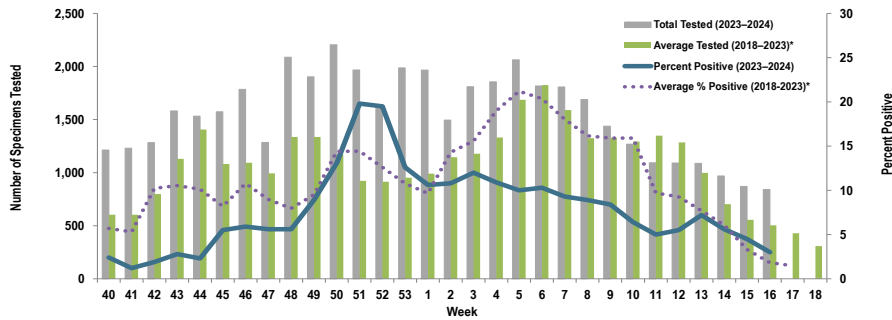


Nationwide in Week 16 (CDC's Week 17), incident ILI activity was 2.2%; this is below the national baseline of 2.9%. Additionally, a total of 58,844 specimens were tested for influenza by select clinical laboratories and submitted to the CDC; 2,263 (3.8%) were positive. Influenza A accounted for 58.5% (n=1,323) of the total positive specimens.

Locations providing Week 16 laboratory data as of 1 May 2024: Camp Zama, Carlisle Barracks, Ft. Belvoir, Ft. Bliss, Ft. Campbell, Ft. Cavazos, Ft. Carson, Ft. Drum, Ft. Eisenhower, Ft. Eustis, Ft. Gregg-Adams, Ft. Huachuca, Ft. Irwin, Ft. Jackson, Ft. Johnson, Ft. Knox, Ft. Leavenworth, Ft. Leonard Wood, Ft. Lewis, Ft. Liberty, Ft. Meade, Ft. Moore, Ft. Novosel, Ft. Riley, Ft. Sam Houston, Ft. Sill, Ft. Stewart, Ft. Wainwright, Korea, Landstuhl Regional Medical Center, Redstone Arsenal, Tripler Army Medical Center, the U.S. Military Academy at West Point, and Walter Reed National Military Medical Center.

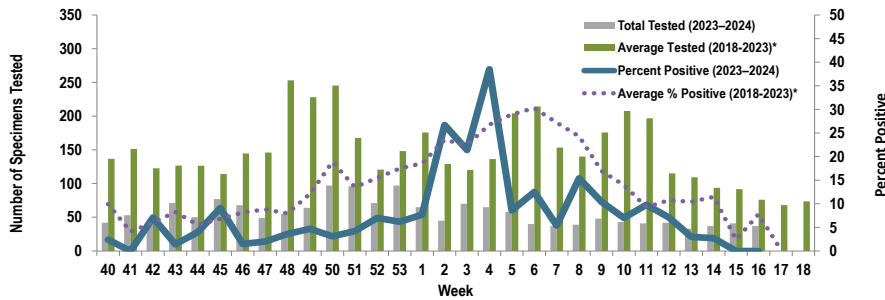
Proportion of Influenza A Positive Specimens by Week and Medical Readiness Command, 2023–2024 as Compared to 2018–2023*

Medical Readiness Command - East



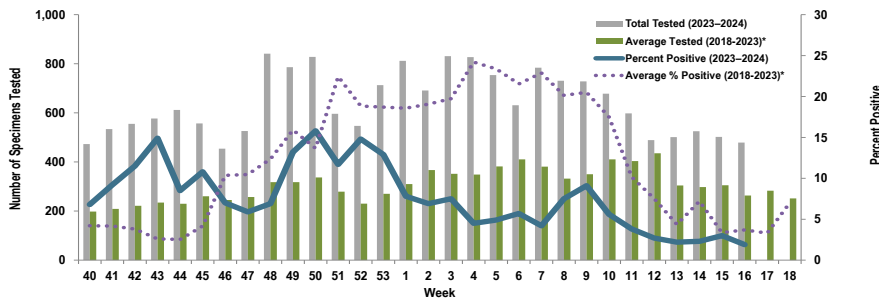
Week 16			
Age Group	AD	Non-AD	Season Total
< 18	0	10	1,321
18–29	3	4	941
30–39	4	1	626
40–49	1	0	404
50–59	0	0	309
60+	0	2	358
Total	8	17	3,959

Medical Readiness Command - Europe (Landstuhl Regional Medical Center)



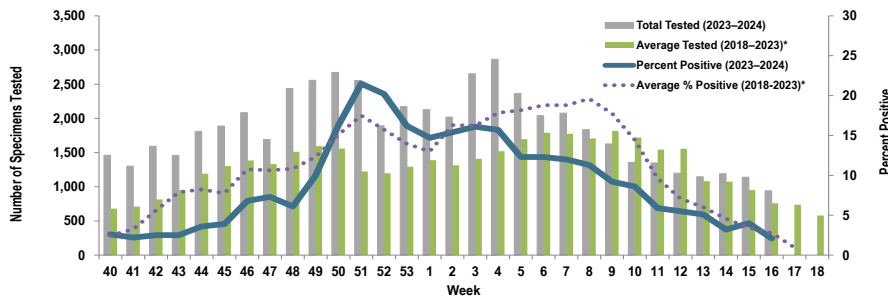
Week 16			
Age Group	AD	Non-AD	Season Total
< 18	0	0	47
18–29	0	0	24
30–39	0	0	25
40–49	0	0	17
50–59	0	0	11
60+	0	0	7
Total	0	0	131

Medical Readiness Command - Pacific



Week 16			
Age Group	AD	Non-AD	Season Total
< 18	0	3	392
18–29	4	0	536
30–39	1	0	274
40–49	0	0	109
50–59	0	1	67
60+	0	0	121
Total	5	4	1,499

Medical Readiness Command - West



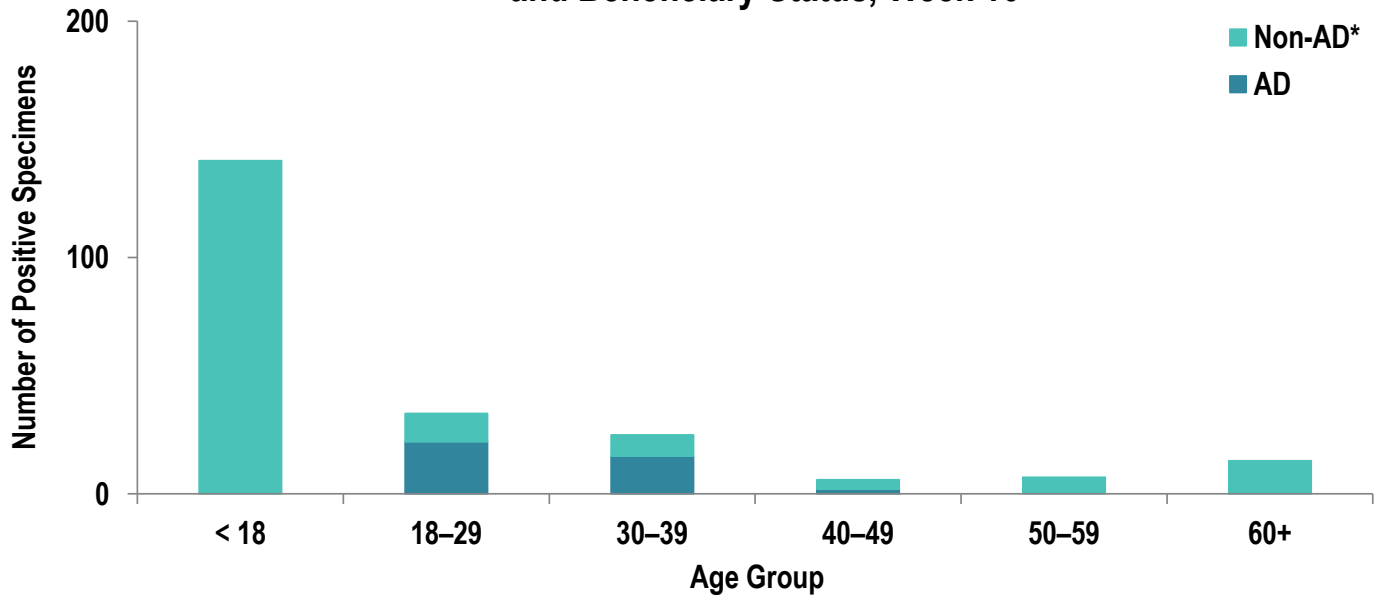
Week 16			
Age Group	AD	Non-AD	Season Total
< 18	0	8	2,010
18–29	5	0	1,478
30–39	2	0	908
40–49	1	1	517
50–59	0	1	382
60+	0	2	447
Total	8	12	5,742

*2018–2019, 2019–2020, and 2022–2023 influenza seasons. Data from the 2020–2021 and 2021–2022 influenza seasons are not included in comparison calculations due to the unusually low incidence of influenza.

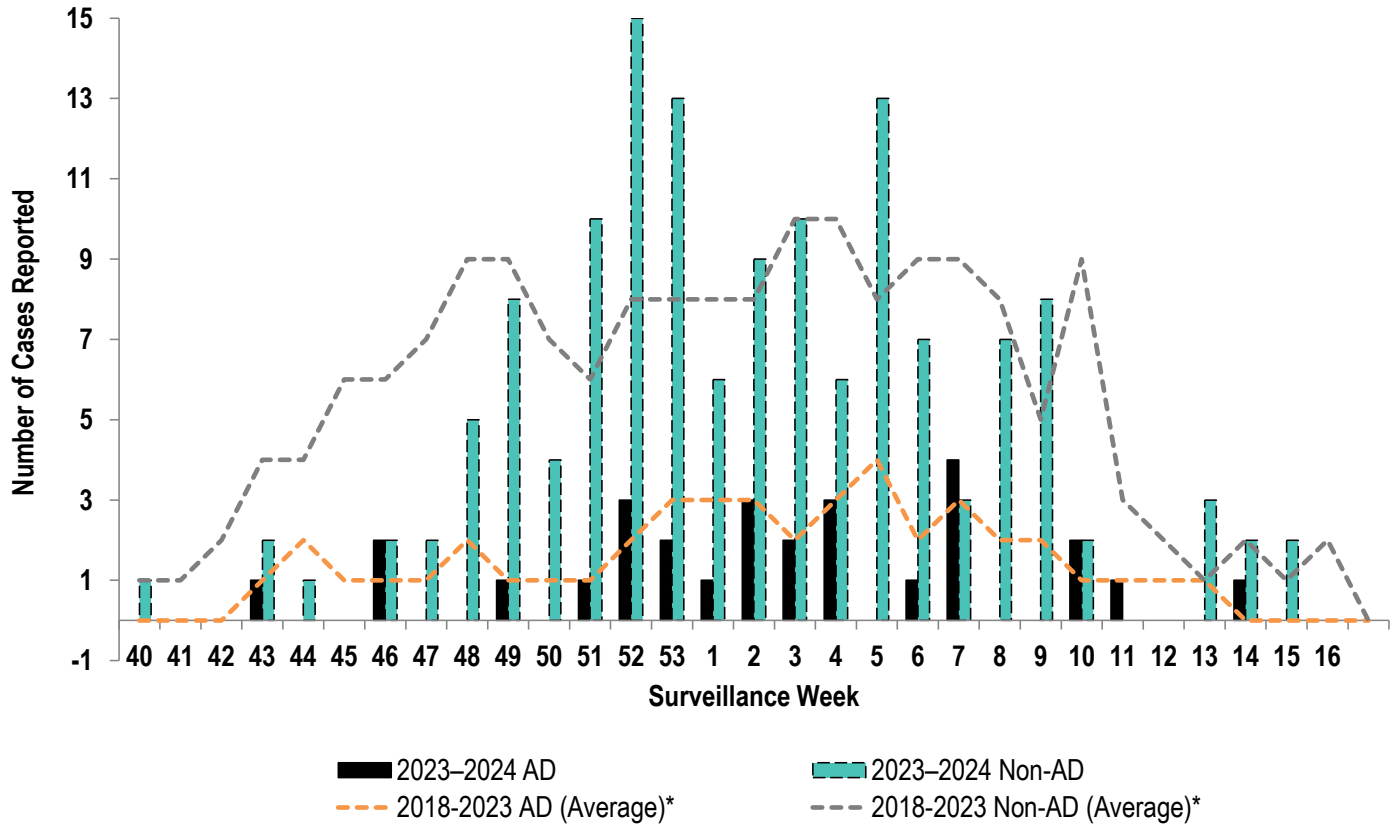
Number of Positive Influenza A Specimens by Region and Duty Status

Region	Week 13		Week 14		Week 15		Week 16	
	AD	Non-AD	AD	Non-AD	AD	Non-AD	AD	Non-AD
MRC-East	44	34	32	22	16	23	8	17
MRC-Europe	0	1	0	1	0	0	0	0
MRC-Pacific	6	5	4	8	3	12	5	4
MRC-West	16	42	14	24	12	34	8	12

Positive Respiratory Specimen Results from Army MTFs by Age Group and Beneficiary Status, Week 16

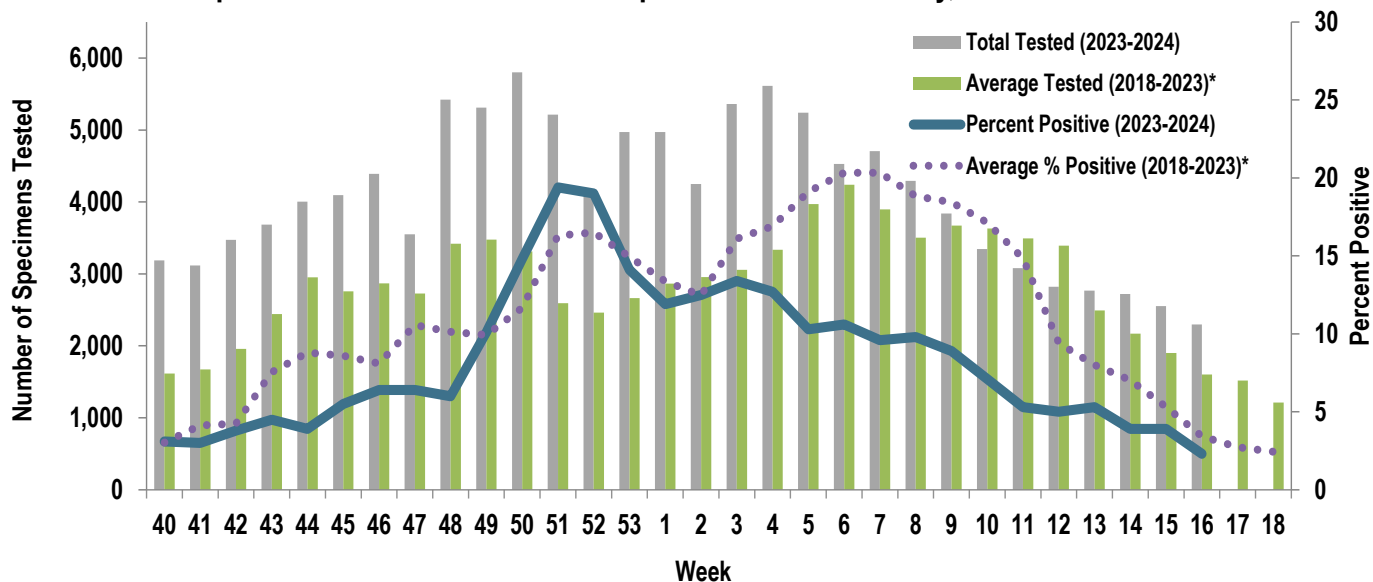


Army Influenza-Associated Hospitalizations Reported in DRSi by Onset Week



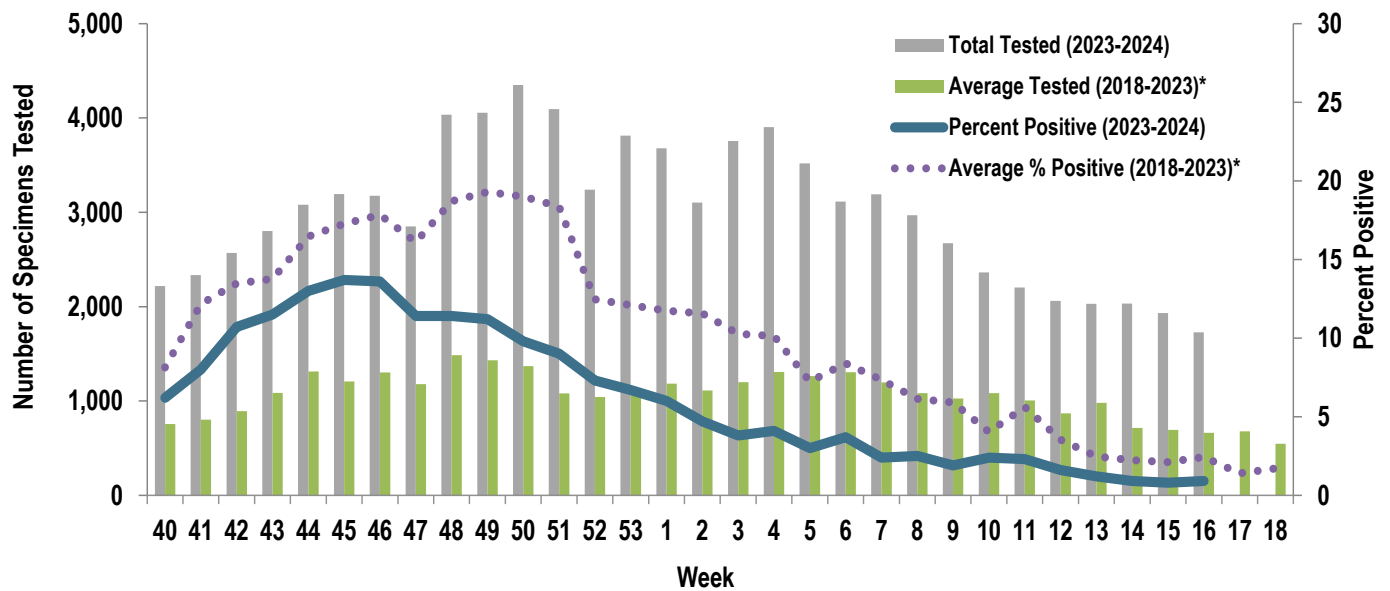
*2018-2019, 2019-2020, and 2022-2023 influenza seasons. Data from the 2020-2021 and 2021-2022 influenza seasons are not included in comparison calculations due to the unusually low incidence of influenza.

Proportion of Positive Influenza A Specimens for U.S. Army, 2023-2024



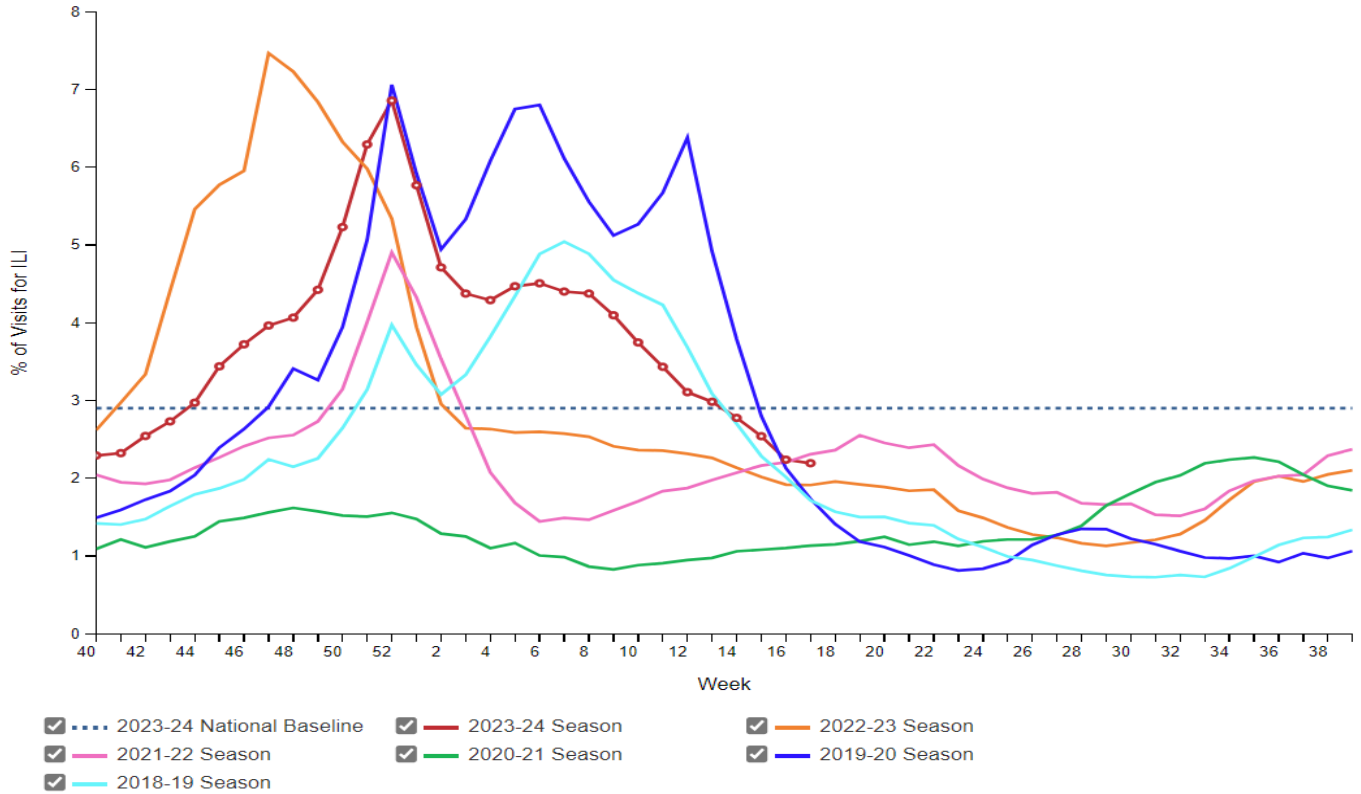
*2018–2019, 2019–2020, and 2022–2023 influenza seasons. Data from the 2020–2021 and 2021–2022 influenza seasons are not included in comparison calculations due to the unusually low incidence of influenza.

Proportion of Positive RSV Specimens for U.S. Army, 2023-2024



*2018–2019, 2019–2020, and 2022–2023 influenza seasons. Data from the 2020–2021 and 2021–2022 influenza seasons are not included in comparison calculations due to the unusually low incidence of influenza.

Percentage of Outpatient Visits for Respiratory Illness Reported by
The U.S. Outpatient Influenza-like Illness Surveillance Network (ILINet),
Weekly National Summary, 2023-24 Season and Selected Previous Seasons



Influenza Positive Tests Reported to CDC by Clinical Laboratories, National Summary, 2023-24 Season, week ending Apr 27, 2024

